

THE YORK 36

A revolutionary custom express cruiser



photo by Jamie Bloomquist

Duck Soup, hull #003, with propeller-driven 480-hp. Volvo

Here it is at last: the high-tech alternative to ordinary mid-size jet boats. While most of the others continue to force traditional design ideas into the requirements of modern water-jet propulsion, the York 36 offers you an entirely new-millennium design, from its unique underbody to its aerodynamic hardtop roof. It is beautiful from every vantage point, with a hull whose low running angles keep it “engaged” for a smoother ride even on wind-blown seas.

Created by Mark Fitzgerald of C. W. Paine Yacht Designs, Inc., this Ferrari of a jet boat looks fast and goes fast, but its design was unrushed, thorough, and precise. The first York jet boat was built for Mr. and Mrs. Andrew Wyeth. Immediately taken with the boat’s fine aesthetics, they commissioned the construction as soon as they saw the drawings.

The full cruising interior, crafted from North American cherry, boasts many luxuries normally associated with much larger boats. These include a Sea-Land Vacuflush head, stainless steel fixtures, and a microwave oven. Additionally, the main bulkhead is farther forward than in most boats this size, providing a single-level cockpit that is a full 16 feet long.



photo by Ben Elliston

Jambo, hull #002,
with twin jet-propelled 300-hp. Yanmars



“ . . . Feadship quality in an exquisitely formed, small and manageable powerboat.”

photo by Jamie Bloomquist



Duck Soup, hull #003

Length overall	35 feet 8 inches
Length on waterline	32 feet 8 inches
Beam	11 feet 8 inches
Draft	Jet: 22 inches Propeller: 3 feet 4 inches
Displacement	14,400 pounds
Fresh water capacity	45 gallons
Maximum speed	32 knots
Cruising speed	30 knots
Fuel capacity	250 gallons
Power options	Twin-engine jet with up to 420 hp. per engine Single-engine jet with up to 480 hp. Propeller-driven vessel with up to 500 hp.



photo by Jamie Bloomquist

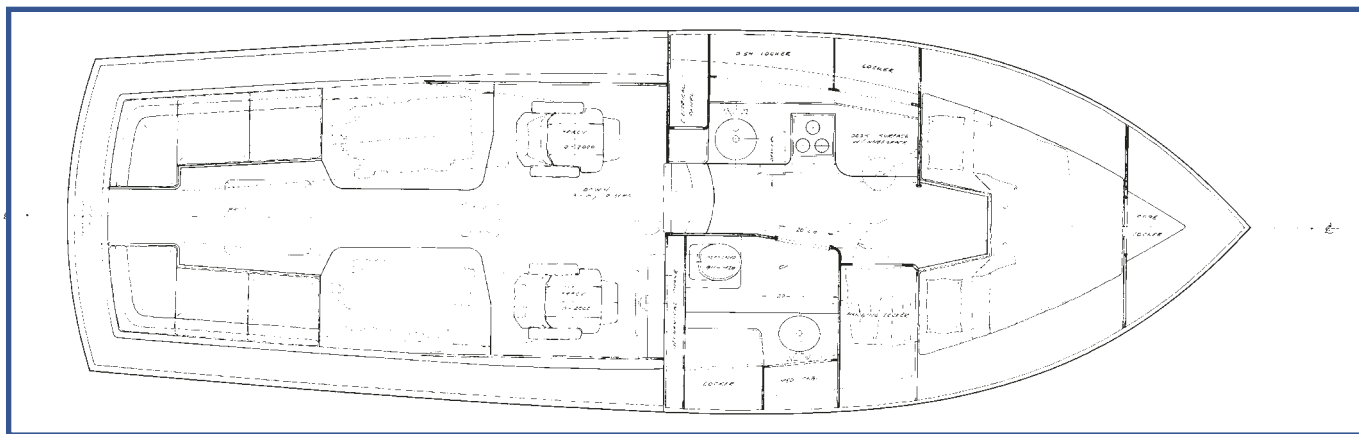
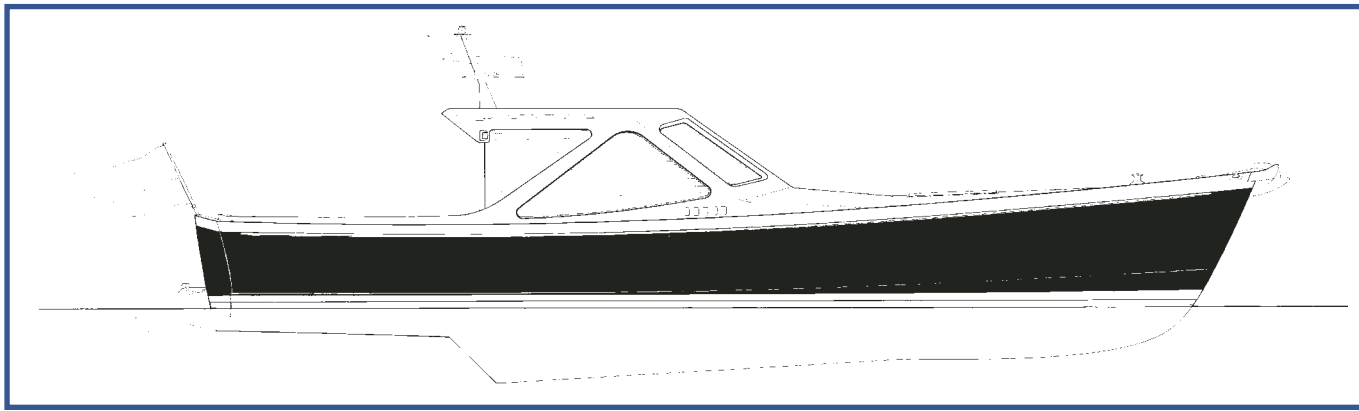
Duck Soup, hull #003



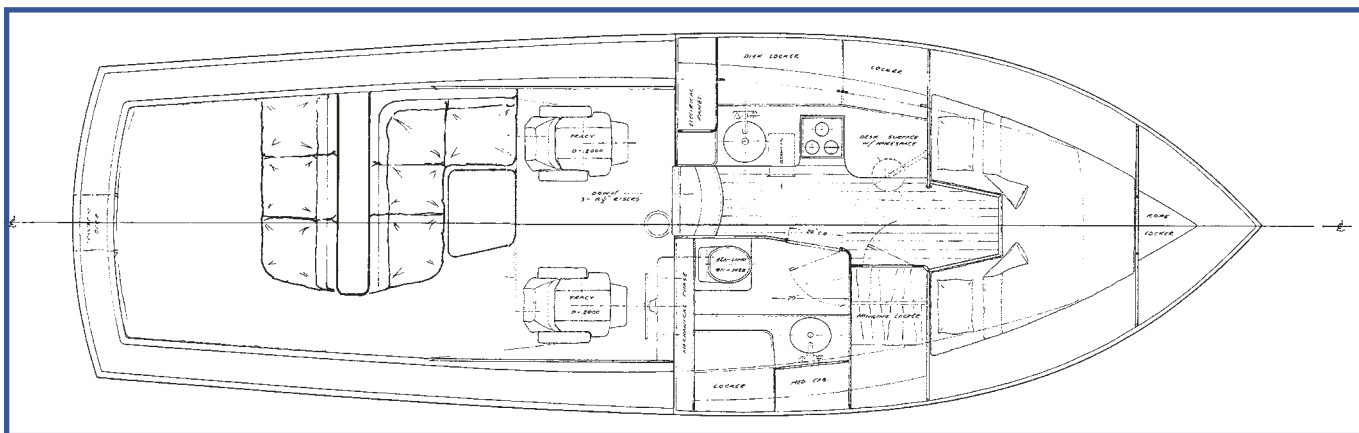
Hull Design and Construction

Much effort was put into model testing and the careful development of this new hull type, which has proven to perform beyond even our expectations in all conditions. The distinctive bottom shape of this sporty speedster has a double chine/lifting rail aft, which fairs into rounded forward sections that are extremely seakindly. The result is a very efficient hull that does not exhibit any of the “squirrelness” that plagues so many other jet boats of similar size. Running trim never exceeds three degrees. Full-length spray rails, as well as the double-chined bottom, help keep things dry on board.

Construction is of hand-laid, fiberglass-stitched fabrics with Core Cell foam core. Only vinyl ester resin is used in the standard lay-up. An optional epoxy laminate is available for added strength-to-weight ratios. Full-length hull girders with a forward reinforced double bottom give security for long ocean runs at high speeds. Additionally, the entire bottom has a layer of Kevlar in the laminate for enhanced puncture protection.



Cockpit with L-shaped port and starboard settees



Cockpit with banquette seating

“ . . . an object of art that begs comparison with Ferrari on every count.”



“[Michael York’s boats are great because of his] heart, hard work, and attitude.”

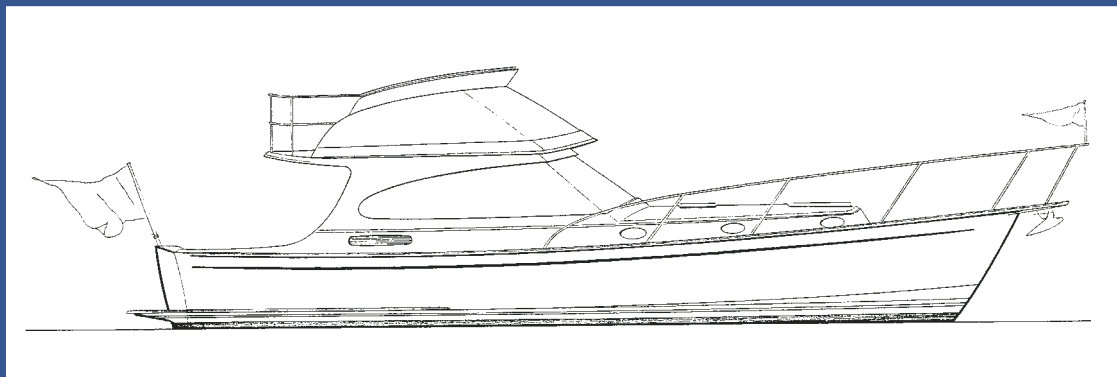
— Ben Ellison, *Power and Motor Yacht* magazine

About York Marine

York Marine is a young and ambitious boatbuilding company. As president, Michael York’s life-long experience with large diesel machinery and his love of offshore powerboats provide the drive that keeps the company in the vanguard of high-tech power yacht construction.

Naval architect Mark Fitzgerald, designer of the York 36, says that the builder’s “can-do personality is guaranteed to produce great boats. His vessels are the very best in sound-attenuating engineering and propulsion-system dynamics. Combine that with Maine Coast yacht joinery, and you can expect a stunning package that will satisfy the spirit.”

York Marine’s philosophy is to build the best boats possible by combining the latest design technology with the skills of our well-trained craftsmen. We encourage you to become involved in every detail of your boat’s construction because we believe the symbiosis of designer, builder, and owner is critical to the entire process.



40-foot twin-engine jet-driven salon cruiser with full accommodation and flying bridge

Current and Future Projects

As a custom boatbuilder, York Marine would be pleased to create a vessel to fit your requirements. Please ask about other sizes and designs, including the 40-footer presently under construction.



For more information, please contact Michael York
207-596-7400 • fax 207-596-6556
11 Gordon Drive • Rockland, Maine 04841
www.yorkmarineinc.com • mikeyork@midcoast.com

All quotes taken from “If Ferrari Designed Boats,” *Maine Boats and Harbors* magazine, except where noted.